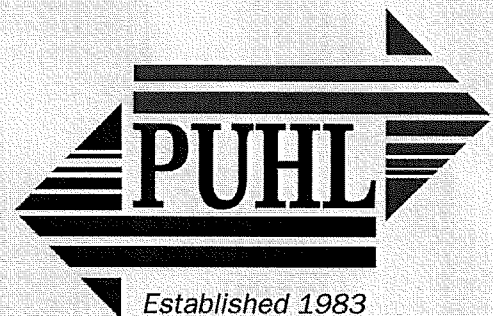


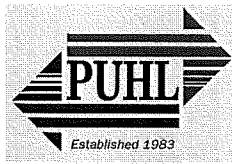
Series 100 Blowers

Custom engineered systems to fit your needs, entire new systems or additions to your existing systems to expand or improve your up time.

Trim Collection Systems • Balers
Touch Screen & Motor Control Centers
Blowers & Fans • Cyclones

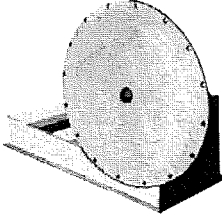
240 Airport Road • Gallatin, TN 37066
Phone (615) 230-9500 • Fax (615) 230-9592
Email: sales@gfpuhl.com • www.gfpuhl.com





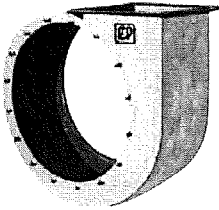
SHAFT

The oversized #4140 Steel Shaft is mounted in spherical roller bearings. This combination allows the best performance possible even under the harshest loading conditions.



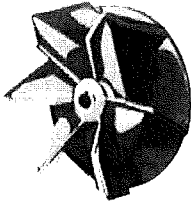
BASE

The Bearing and Motor Mounting Base is fabricated as an integral unit from structural steel and heavy steel plate. This one piece construction simplifies field installation and yields a stronger and more exacting set-up for the drive components.



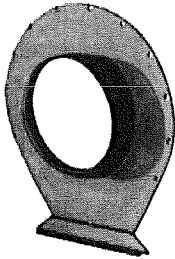
HOUSING

The Housing Section is fabricated from heavy steel plate and is of a welded construction. The continuous welded construction provides a dust-tight and leakproof housing. All housings are fabricated so they may be rotated or reversed.



WHEEL

The Wheel has heavy steel plate blades, full diameter back disc and full-length reinforcing gussets. Blades and gussets of wheel are of angular construction providing a stronger, self-cleaning type of wheel.



PLATES

The Front and Back Plates are fabricated from heavy plate steel and are designed to be removed quickly and easily. This provides for easy access to the blower wheel.

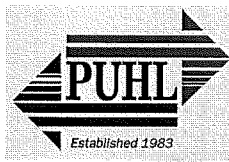
FEATURES

- Developed from extensive use on paper, paperboard and other materials.
- Non-clogging wheel designed for dependable, long-life, trouble-free operation.
- AIR VOLUMES TO 17,000 C.F.M.
- UP TO 26" STATIC PRESSURE

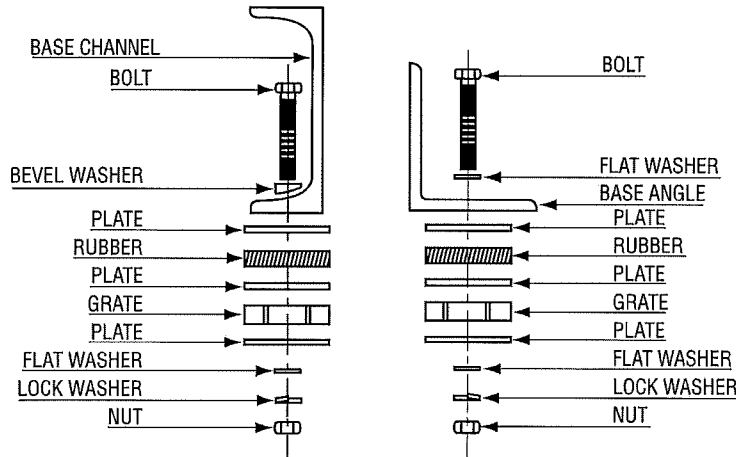
Our Material Handling Blower is designed specifically for industrial use on Air Conveyance Systems handling paper and paperboard materials. These Blowers have proven their capabilities on hundreds of tough applications all across the country.

AS WE CONSTANTLY STRIVE TO IMPROVE OUR PRODUCT, SPECIFICATIONS ARE SUBJECT TO CHANGE WITHOUT NOTICE.

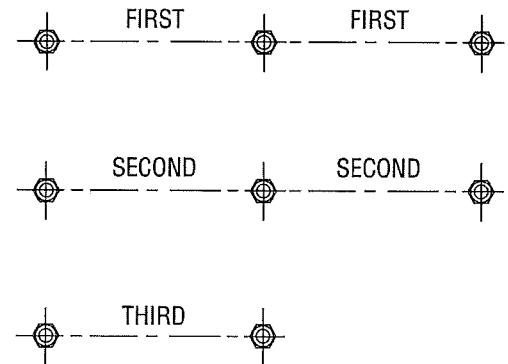
SERIES 100 BLOWERS



BLOWER MOUNTING ASSEMBLY



BOLT TIGHTENING SEQUENCE

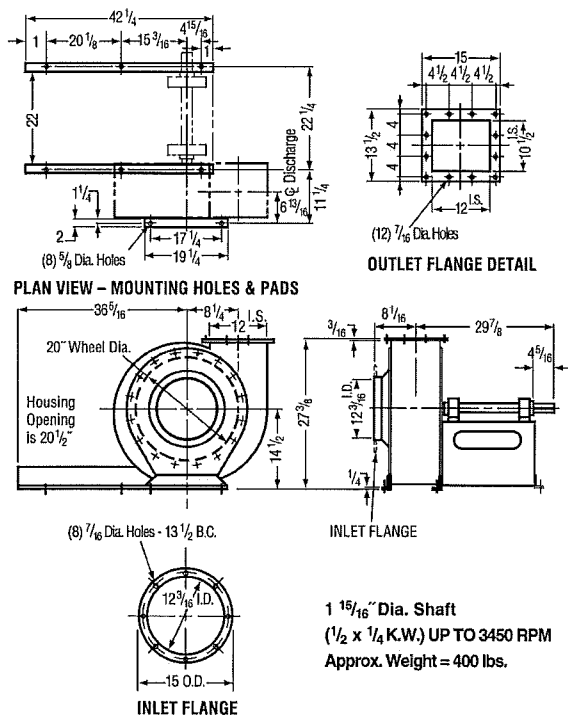


SPECIFICATIONS

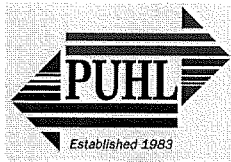
112

Performance data based on air at 70°F.

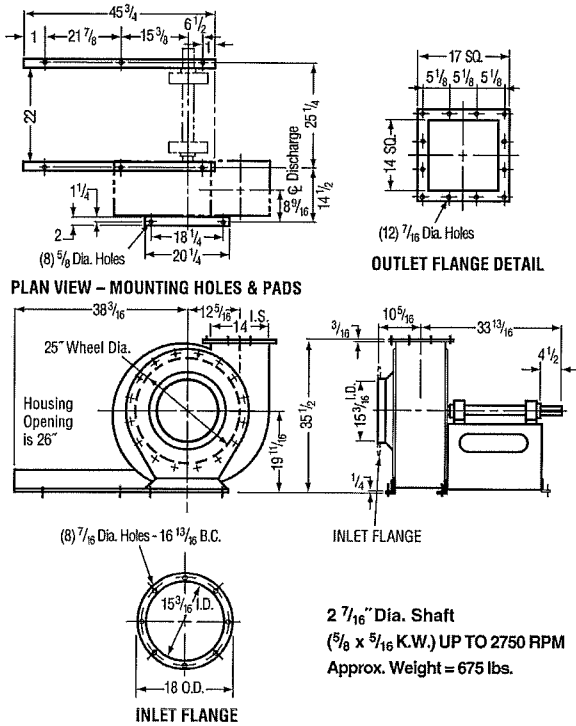
CUBIC FEET PER MINUTE



Static Press.		CUBIC FEET PER MINUTE				
		1920	2430	3000	3630	4320
7"	BHP	3.9	4.9	6.4	8.4	11.2
	RPM	1818	1887	1960	2082	2215
8"	BHP	4.5	5.6	7.2	9.3	12.2
	RPM	1925	1992	2072	2186	2305
9"	BHP	5.1	6.3	8.0	10.2	13.2
	RPM	2029	2093	2176	2283	2393
10"	BHP	5.7	7.0	8.8	11.1	14.2
	RPM	2130	2190	2273	2374	2479
11"	BHP	6.3	7.7	9.6	12.1	15.3
	RPM	2228	2283	2364	2460	2563
12"	BHP	7.0	8.4	10.4	13.1	16.4
	RPM	2324	2372	2450	2542	2645
13"	BHP	7.7	9.2	11.2	14.0	17.5
	RPM	2414	2458	2532	2621	2725
14"	BHP	8.4	10.0	12.1	15.0	18.6
	RPM	2500	2541	2611	2698	2803
15"	BHP	9.1	10.8	13.0	15.9	19.7
	RPM	2583	2622	2688	2773	2879
16"	BHP	9.8	11.6	13.9	16.9	20.8
	RPM	2664	2701	2763	2846	2953



115

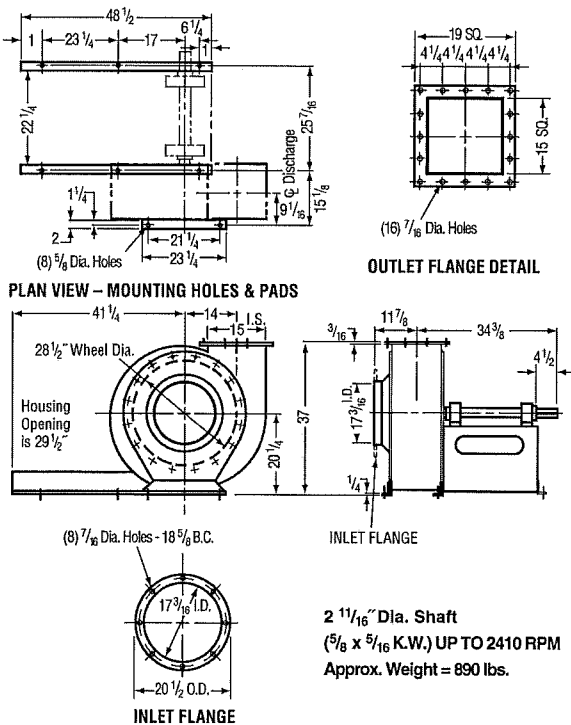


Performance data based on air at 70°F.

CUBIC FEET PER MINUTE

Static Press.		3630	4320	5070	5880	6750
7"	BHP	7.4	9.1	11.1	13.8	17.3
	RPM	1493	1542	1603	1676	1768
8"	BHP	8.4	10.2	12.4	15.2	18.9
	RPM	1579	1628	1690	1760	1840
9"	BHP	9.4	11.3	13.7	16.7	20.5
	RPM	1660	1708	1770	1837	1911
10"	BHP	10.5	12.5	15.0	18.2	22.1
	RPM	1737	1783	1845	1909	1981
11"	BHP	11.6	13.7	16.4	19.7	23.7
	RPM	1811	1854	1916	1978	2049
12"	BHP	12.7	14.9	17.8	21.2	25.4
	RPM	1883	1922	1983	2044	2116
13"	BHP	13.9	16.2	19.2	22.7	27.1
	RPM	1953	1988	2047	2108	2181
14"	BHP	15.1	17.5	20.6	24.3	28.9
	RPM	2021	2053	2109	2170	2240
15"	BHP	16.3	18.8	22.0	25.9	30.7
	RPM	2087	2117	2169	2230	2305
16"	BHP	17.5	20.1	23.4	27.4	32.5
	RPM	2151	2180	2228	2288	2363

117



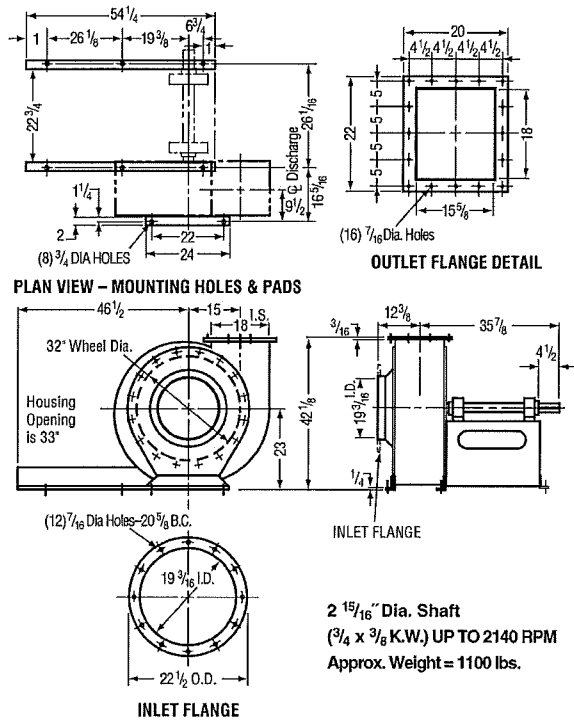
Performance data based on air at 70°F.

CUBIC FEET PER MINUTE

Static Press.		5070	5880	6750	7680	8670
7"	BHP	10.6	12.9	15.8	19.4	23.9
	RPM	1365	1414	1470	1542	1624
8"	BHP	12.0	14.4	17.4	21.2	26.1
	RPM	1438	1490	1542	1608	1686
9"	BHP	13.3	16.0	19.1	23.0	28.2
	RPM	1508	1559	1610	1672	1746
10"	BHP	14.7	17.5	20.8	24.8	30.3
	RPM	1575	1623	1675	1734	1804
11"	BHP	16.1	19.0	22.6	26.7	32.4
	RPM	1639	1684	1737	1794	1860
12"	BHP	17.5	20.6	24.4	28.6	34.5
	RPM	1700	1743	1796	1852	1915
13"	BHP	19.0	22.2	26.2	30.6	36.6
	RPM	1759	1800	1853	1908	1969
14"	BHP	20.5	23.8	28.0	32.6	38.7
	RPM	1816	1855	1908	1962	2022
15"	BHP	22.0	25.4	29.8	34.6	40.8
	RPM	1871	1908	1961	2014	2074
16"	BHP	23.6	27.0	31.6	36.6	43.0
	RPM	1924	1960	2012	2065	2125



119

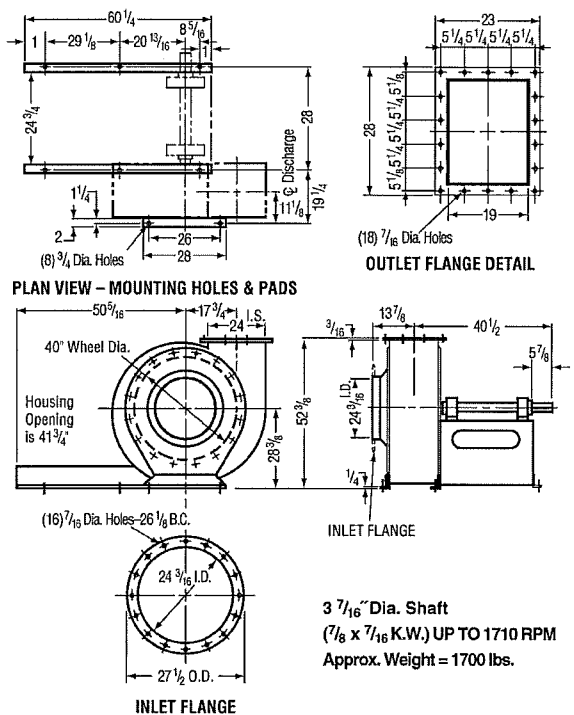


Performance data based on air at 70°F.

CUBIC FEET PER MINUTE

Static Press.		5880	6750	7680	8670	9720
7"	BHP	12.0	14.3	16.9	20.3	24.3
	RPM	1185	1222	1265	1305	1363
8"	BHP	13.7	16.1	18.9	22.4	26.7
	RPM	1253	1289	1325	1373	1423
9"	BHP	15.3	17.9	20.9	24.5	29.1
	RPM	1316	1351	1386	1434	1480
10"	BHP	16.9	19.8	22.9	26.7	31.5
	RPM	1375	1409	1444	1492	1534
11"	BHP	18.6	21.7	24.9	28.9	33.9
	RPM	1431	1464	1500	1547	1586
12"	BHP	20.4	23.6	27.0	31.1	36.4
	RPM	1485	1516	1554	1600	1637
13"	BHP	22.2	25.5	29.1	33.3	38.9
	RPM	1538	1567	1606	1651	1687
14"	BHP	24.0	27.4	31.3	35.6	41.4
	RPM	1590	1617	1656	1699	1735
15"	BHP	25.9	29.4	33.4	38.0	43.9
	RPM	1641	1666	1704	1745	1782
16"	BHP	27.8	31.4	35.6	40.4	46.4
	RPM	1691	1714	1751	1790	1828

124



Performance data based on air at 70°F.

CUBIC FEET PER MINUTE

Static Press.		7680	9720	12000	14520	17280
7"	BHP	15.5	20.2	26.3	35.0	46.6
	RPM	917	959	1006	1061	1142
8"	BHP	17.8	22.7	29.4	38.5	50.8
	RPM	972	1010	1056	1111	1189
9"	BHP	20.1	25.3	32.5	42.0	55.0
	RPM	1024	1059	1104	1159	1233
10"	BHP	22.4	28.0	35.7	45.6	59.2
	RPM	1074	1107	1150	1205	1275
11"	BHP	24.8	30.8	38.9	49.3	63.4
	RPM	1122	1153	1194	1249	1315
12"	BHP	27.3	33.7	42.1	53.1	67.6
	RPM	1168	1197	1237	1291	1354
13"	BHP	29.9	36.6	45.3	56.9	71.8
	RPM	1212	1240	1279	1331	1392
14"	BHP	32.6	39.5	48.6	60.7	76.1
	RPM	1257	1282	1320	1370	1430
15"	BHP	35.4	42.5	52.0	64.5	80.4
	RPM	1299	1323	1360	1408	1467
16"	BHP	38.2	45.6	55.4	68.3	84.8
	RPM	1340	1362	1399	1445	1503

FAN ROTATION, DISCHARGE, AND MOTOR MOUNTING

(Viewed from Drive Side)

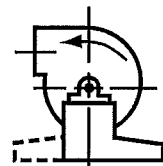


FIGURE 1
Top Horizontal
Counter Clockwise

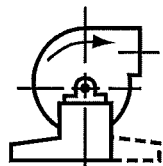


FIGURE 2
Top Horizontal
Clockwise

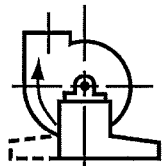


FIGURE 5
Up Blast
Clockwise

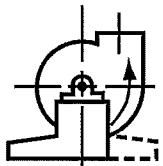


FIGURE 6
Up Blast
Counter Clockwise

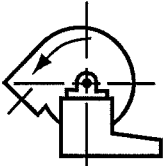


FIGURE 9
Top Angular Down
Counter Clockwise

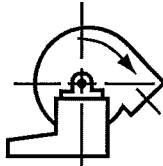


FIGURE 10
Top Angular Down
Clockwise

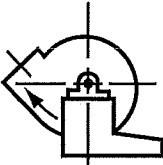


FIGURE 11
Bottom Angular Up
Clockwise

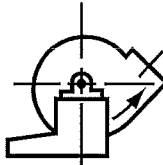


FIGURE 12
Bottom Angular Up
Counter Clockwise

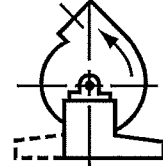


FIGURE 13
Top Angular Up
Counter Clockwise

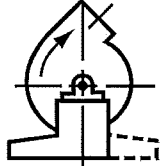
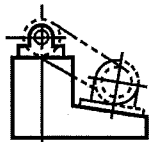


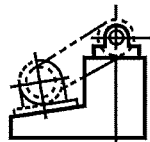
FIGURE 14
Top Angular Up
Clockwise

Motor Right Side



9R*
Arrangement

Motor Left Side



9L*
Arrangement

NOTE:

- Figures 9 and 11 use 9R arrangement only.
- Figures 10 and 12 use 9L arrangement only.
- Figures 11 and 12 require special (higher) bearing base on some sizes.

* Motor mounting bases are not pre-drilled for motor slide bases.

SERIES 100 BLOWERS ORDERING CHECKLIST

1. Quantity
2. Size
3. Figure (Rotation and Discharge)
If angular discharge, specify required angle measured from horizontal centerline.
4. Arrangement (motor mounting side)
5. Static Pressure and C.F.M. Requirements
6. Shipping Instructions:
 - Destination
 - Via
 - Prepaid or Collect
 - Shipping Date

The G.F. Puhl Co., Inc. can provide, at additional cost, the motor, motor slide base, V-belt drive and belt guard assembled on the exhauster in accordance with your requirements. Please specify motor horsepower and type enclosure (i.e. open drip proof, totally enclosed, fan cooled, etc.).

The capacity tables shown in this brochure are based on the exhauster handling standard air at 70° F., 29.92 barometric pressure at .075 pounds per cubic foot. For operating conditions other than these (high or low temperatures and/or high altitudes) contact the factory for corrected capacities.

Custom engineered systems to fit your needs, entire new systems or additions to your existing systems to expand or improve your up time.

Trim Collection Systems • Balers
Touch Screen & Motor Control Centers
Blowers & Fans • Cyclones

240 Airport Road • Gallatin, TN 37066
Phone (615) 230-9500 • Fax (615) 230-9592
Email: sales@gfpuhl.com • www.gfpuhl.com

